

User guide for TurningPoint

Response Cards and RF Receiver



In preparation for conducting a TurningPoint Presentation, please review the following items:

1. Each lecture hall has a **RF Receiver** with a programmed channel.
2. Each **ResponseCard RF** (clicker) must match the Receiver channel.
3. TurningPoint provides a Polling Test to determine if **ResponseCards RF** are working.
4. If you are using a Participant List, please use a test slide for responds.



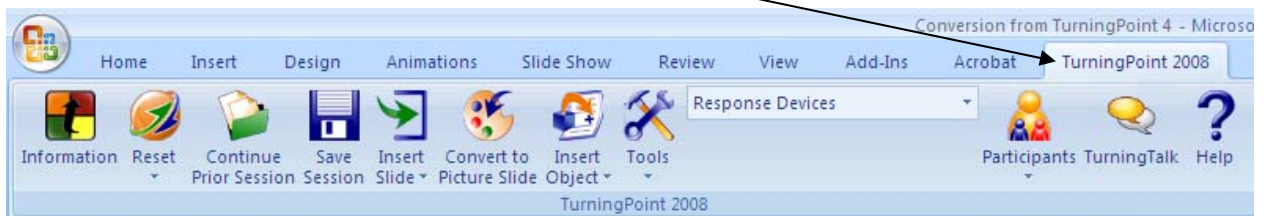
The **RF Receiver** for Lecture Hall D is programmed for channel **04**. Lecture Hall E has been programmed for channel **05**.

1. How to determine which channel the **RF Receiver** is programmed to.

a) Launch TurningPoint.



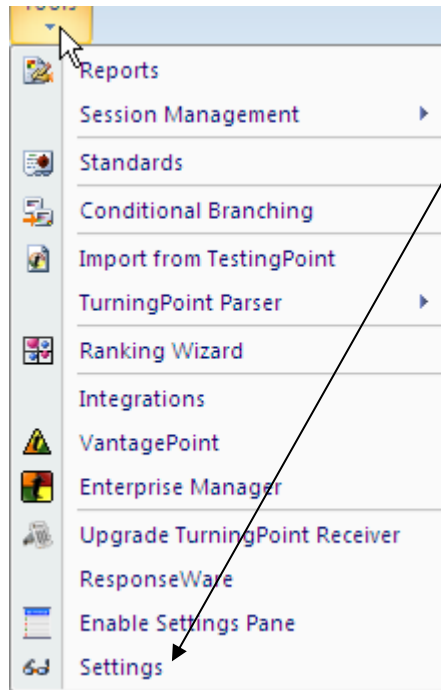
b) Click onto the TurningPoint 2008 tab.

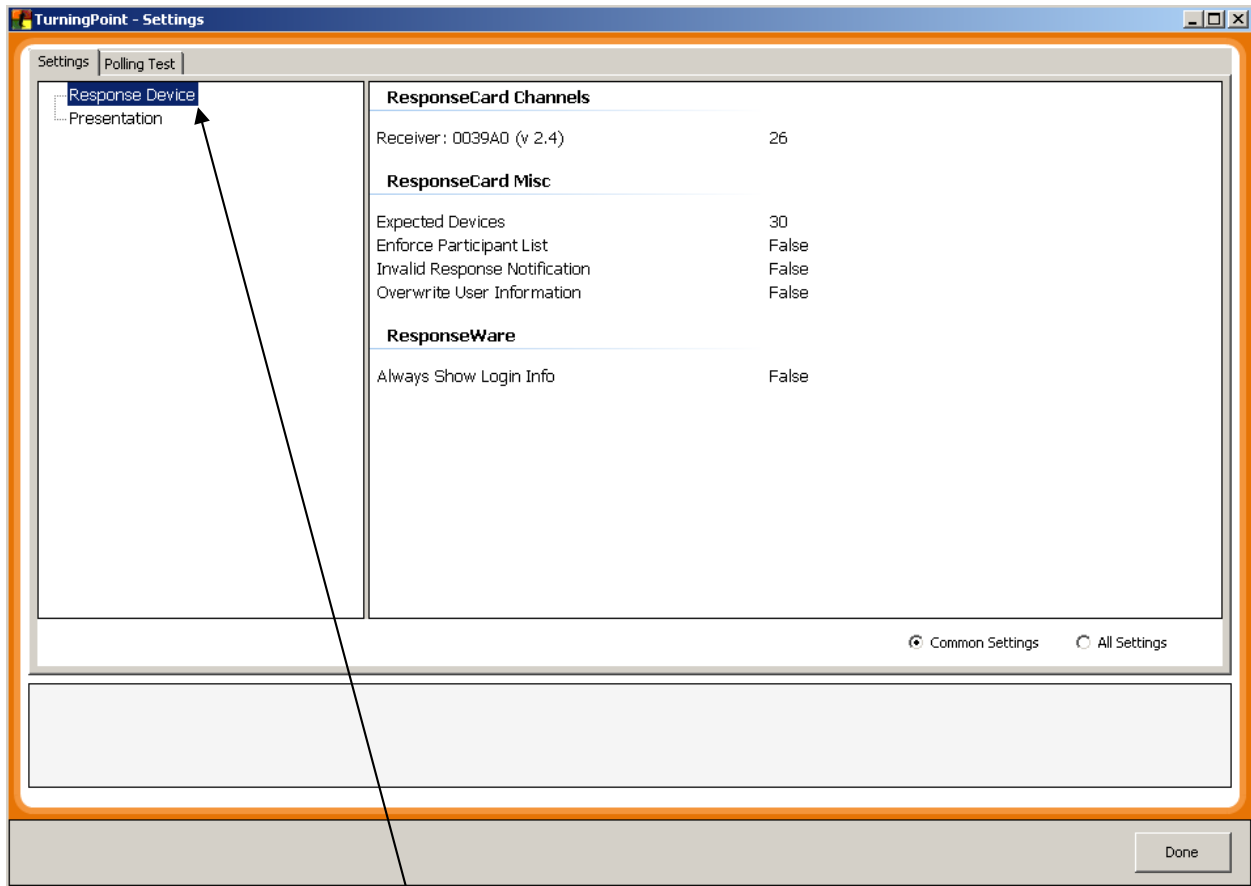


c) Click onto the **Tools icon**.



d) A drop down will appear, click on Settings (eyeglass).





e) Click onto the Response Device. Under the **ResponseCard Channels**, you will see the Receiver I.D. # and to the right is located the channel #.

1. How to change the Channel Setting for **ResponseCard RF**.

- a) Press the Go or Channel button.

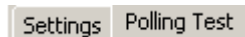


ResponseCard RF

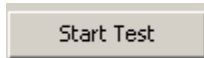
- b) While the light is flashing red and green enter the two digit channel code (e.g. channel 4 = 04) a solid yellow and red light will flash.
- c) After enter the two digit channel code, then press and release the Go or Channel button. A solid green light will appear.
- d) Press and release the 1/A button. Some **ResponseCards RF** will quickly flash a yellow and red light to confirm. Other may not.

2. Turning**Point** provides a **Polling Test** to determine if **ResponseCards RF** are working.

- a) Steps: 1a to 1f.
- b) Click onto the Polling Test tab.

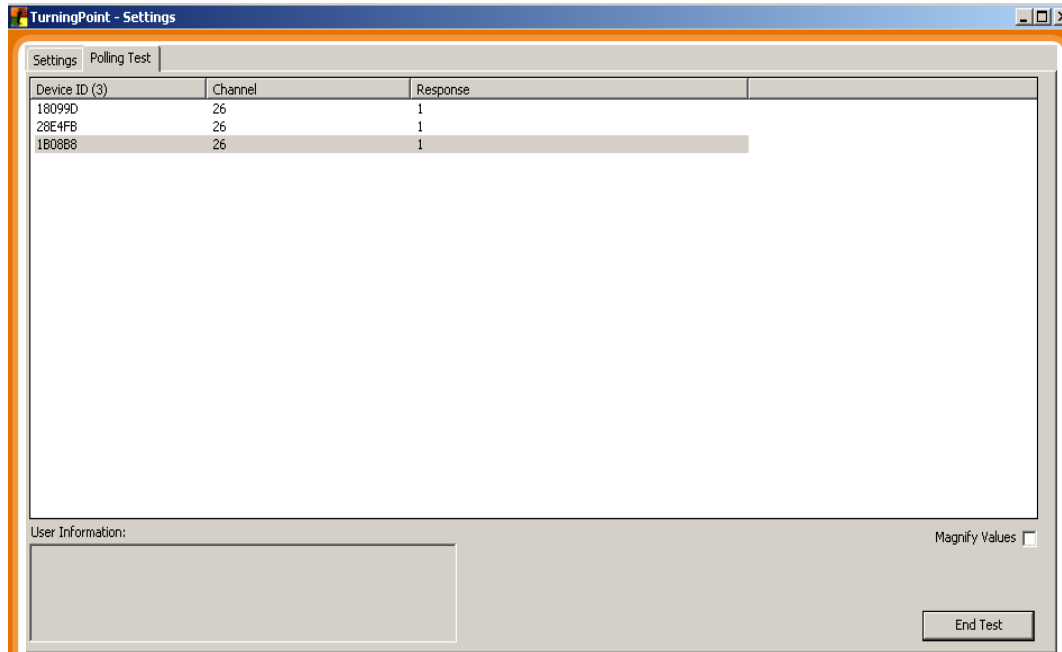


- c) Then click onto the Start Test box.

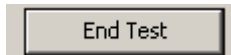


- d) Click any number from the **ResponseCard RF** (clicker).

e) The Device ID (number of responses), the Channel number and the Response will appear.




f) At the completion of the Polling Test, click the End Test box.



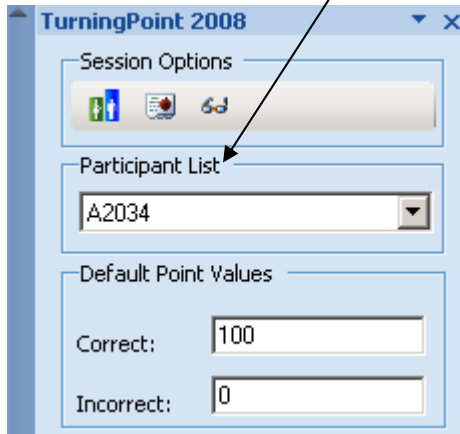
1. We recommend that you create a test slide and insert in your presentation.

F-7 Response Grid
Click ResponseCard only **ONCE** !

1. Click # 1 **Once**. The response grid will change the color to purple.
2. Remember the response grid indicates your name and device # to everyone.

- a. Log onto TurningPoint and  your presentation.
open

b. Locate your Participate List from the drop down.



c. Locate your test slide and start slide show.

d. Polling will begin.



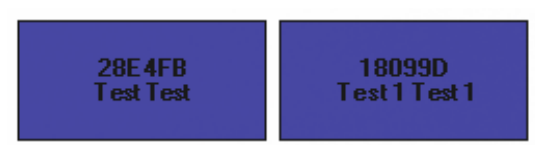
e. Click F-7 –Show the Response Grid

f. The Response Grid will appear at the bottom of the screen.



g. Click 1 on the **ResponseCard RF** for Yes or 2 for NO.

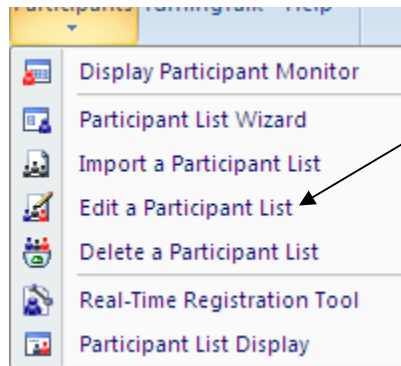
h. The color of the Response grid will change colors.



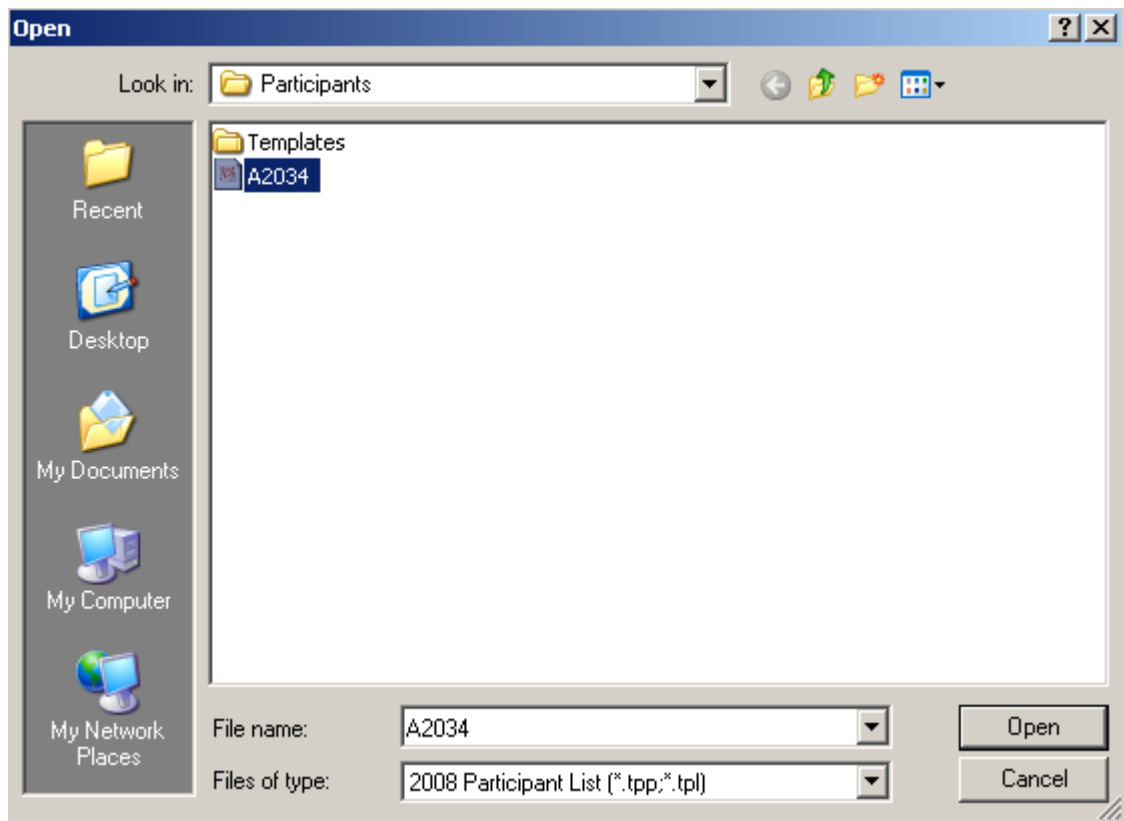
1. To correct any discrepancies, click onto the Participants icon.



2. From the drop down, click onto the Edit a Participant List.



3. A window will open with the Participant List.
4. Select the Participation list. Click open.



5. Click within the cell and make corrections and click Done.

